

# MONTHLY MEMBERSHIP PROGRESS REPORT

District 26 M5

Results as of: 12/31/2019

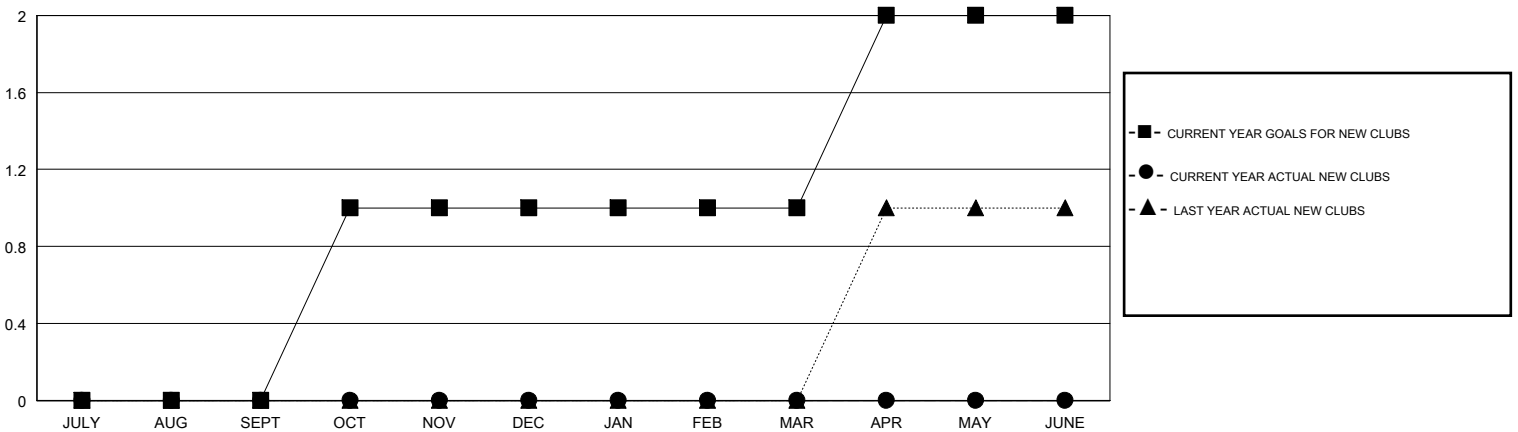
GMT:

LOCATION MISSOURI

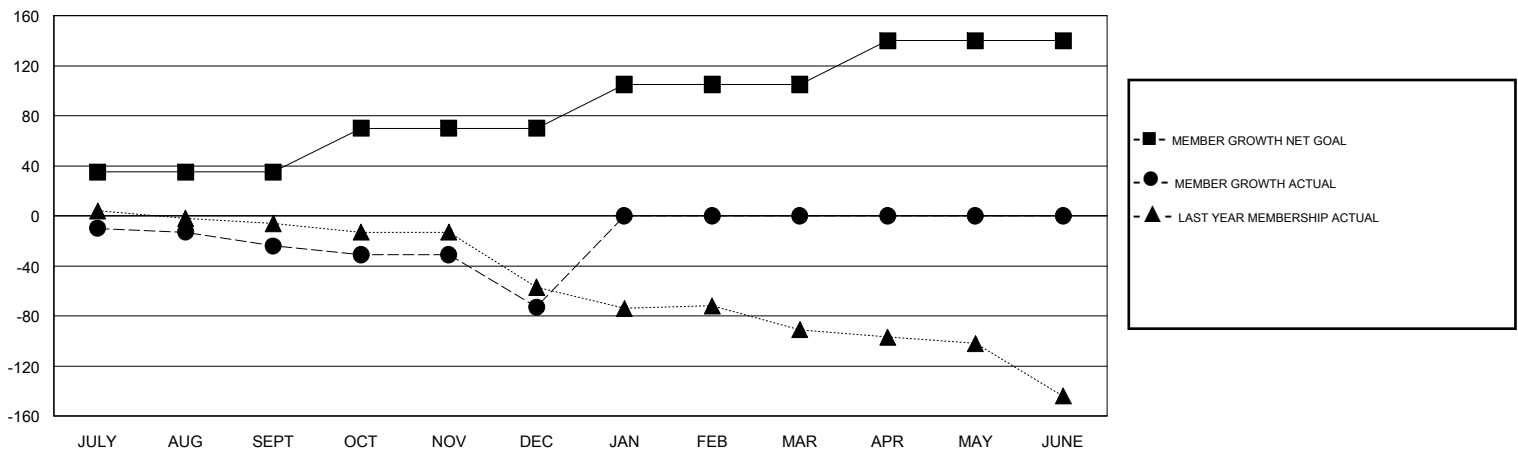
GMT CA

Clubs				Members			
RESULTS FOR 2019-2020				RESULTS FOR 2019-2020			
QUARTER	NEW CLUB GOAL	NEW CLUBS	DROPPED CLUBS	QUARTER	MEMBER GROWTH NET GOAL	MEMBER GROWTH ACTUAL	DROPPED MEMBERS ACTUAL (including transfers)
JULY/AUG/SEPT	0	0	0	JULY/AUG/SEPT	35	24	45
OCT/NOV/DEC	1	0	3	OCT/NOV/DEC	35	9	57
JAN/FEB/MAR	0	0	0	JAN/FEB/MAR	35	0	0
APR/MAY/JUNE	1	0	0	APR/MAY/JUNE	35	0	0

GOALS AND ACTUAL NEW CLUBS CUMULATIVE



GOALS AND ACTUAL MEMBERS CUMULATIVE



DROPPED CLUBS: 3	17 CLUBS OF 51 ADDED 1 OR MORE NEW MEMBERS	<b>GENDER DISTRIBUTION</b> MALE 731 (66.88%) FEMALE 362 (33.12%)
<b>DROPPED MEMBERS</b> DECEASED 3 CLUB CANCELLED 30 OTHER 69 <b>TOTAL 102</b>	<a href="#">CLICK HERE FOR CUMULATIVE MEMBERSHIP DATA</a>	TOTAL FAMILY UNIT MEMBERS 238 FAMILY MEMBERS PAYING HALF DUES 123